

# Polykat®

## Repair

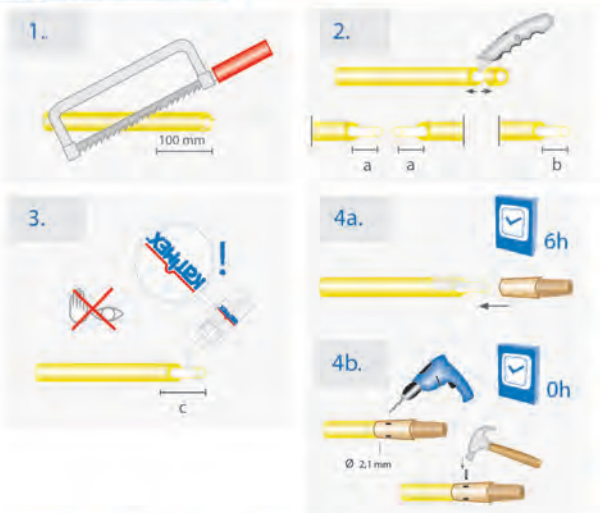
The repair of the glass fibre rod is remarkably easy and can be carried out by every user. The rod could be damaged if it is used in excess of the load limits specified. In case of a rod breakage, the fibreglass rod can be repaired and need not be replaced. The procedure is the same regardless of the type of rod involved; the ends of the rod must simply be stripped to a different length.

1. Make a straight cut in the fibreglass rod approx. 10 cm in front of the point where the break has occurred using a metal saw.  
Note: Fibreglass rods with diameters of 3 and 4.5 mm should be cut through using a pair of side cutting pliers.
2. Remove the yellow plastic coating from the fibreglass rod as with an electrical cable to the lengths specified in the table below. When doing this ensure that the fibreglass core is not cut or damaged in any way as this could lead to a premature break in the rod. The fibreglass core must be a flush fit with the threaded side of the end-piece and the tip of the end-piece must overlap the plastic coating. If the end-piece cannot be slid on trim the cut edge of the fibreglass core with fine abrasive paper.
3. Apply the adhesive thinly and uniformly over the fibreglass core and the surface coating so that the end-piece is covered along its entire length.
4. a) With a slight twist, slide the end over the fibreglass rod and coating to the end stop. Allow the adhesive to harden for at least six hours. If you wish to continue working with the rod immediately wait at least 10 minutes before unreeling the rod completely and use the rod end at the opposite end to the repaired break. b) For fibreglass profiles with a diameter of 6 mm or higher, drill a hole through the opening of the rod end and insert the coiled spring pin.

**Attention!** When using the special adhesive, make sure to avoid any contact with skin and eyes.

### Reparatur

### Repair / Réparation



|    | 1.      | 2.    |       |       |
|----|---------|-------|-------|-------|
|    | Ø       | b     | c     | a     |
| 1. | 3,0 mm  | 8 mm  | 30 mm | 7 mm  |
| 2. | 3,0 mm  | 14 mm | 17 mm | 7 mm  |
|    | 4,5 mm  | 15 mm | 20 mm | 9 mm  |
|    | 7,2 mm  | 60 mm | 70 mm | 15 mm |
|    | 9,0 mm  | 57 mm | 72 mm | 25 mm |
|    | 11,0 mm | 65 mm | 80 mm | 25 mm |